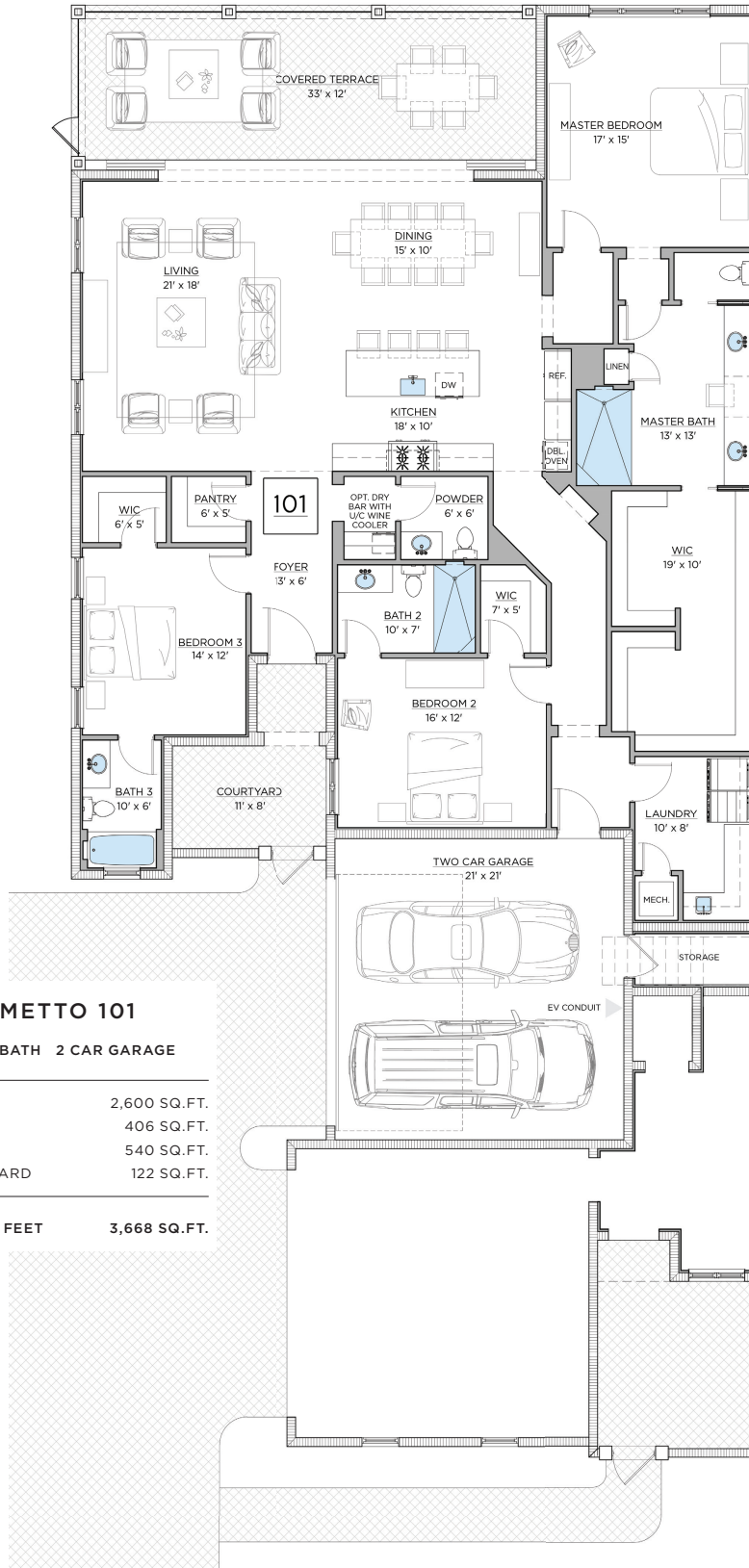


**PALMETTO 101 FLOORPLAN**



**PALMETTO 101**

**3 BED 3.5 BATH 2 CAR GARAGE**

TOTAL A/C	2,600 SQ.FT.
TERRACE	406 SQ.FT.
GARAGE	540 SQ.FT.
ENTRY COURTYARD	122 SQ.FT.
<b>TOTAL SQUARE FEET</b>	<b>3,668 SQ.FT.</b>

ORAL REPRESENTATIONS CANNOT BE RELIED UPON AS CORRECTLY STATING REPRESENTATIONS OF THE DEVELOPER. FOR CORRECT REPRESENTATIONS, MAKE REFERENCE TO THE DOCUMENTS REQUIRED BY SECTION 718.503, FLORIDA STATUTES, TO BE FURNISHED BY A DEVELOPER TO A BUYER OR LESSEE. Air-conditioned square footage is compiled by using the architectural method. From the outside finished surface of the exterior walls to the centerline of the interior common walls and includes the floor area on which the exterior and common walls are located, the foyer and interior stairs for the second-floor units. The architectural method of compilation is used to calculate the square footage on all residential floor plans. All approximate dimensions of each room are in most cases measured from the inside finished surface of a given wall to the inside finished surface of the opposite wall within each room and are taken from the greatest points of each given room. Actual square footages and dimensions may vary as a result of field conditions and changes during construction. The dimensions, sizes, features, configurations and other information contained on this drawing are subject to change without notice and are meant to be illustrative only. All depictions of furniture, soffits, floor coverings and other matters of detail, including items of finish and decoration, are conceptual only and are not included with the residence unless expressly specified in the standard features exhibit to the purchase agreement. All residences are sold unfurnished. Copyright © 2022 FC Dorado, LLC. All Rights Reserved. Fiddler's Creek Realty, Inc. REALTORS® 11.08.2022